

## Pleito de Inclusão de Ex-Tarifário

ALL DIMENSIONS IN mm

IF IN DOUBT, ASK

DO NOT SCALE DRAWING

DRAWING REVISION SUBJECT TO CHANGE, UNLESS CHECKED AND AUTHORISED

ATTENTION  
DEBURRING AND CLEANLINESS  
ARE EXTREMELY IMPORTANT

THIS ASSEMBLY CONTAINS COMPONENTS / SUB-ASSEMBLIES THAT  
HAVE BEEN DEEMED EITHER CRITICAL OR SIGNIFICANT.

REFERENCE WEIGHTS

01	END CAP ASSEMBLY	2.45 Kg
02	#A PISTON ROD	89.0 Kg
03	PISTON HEAD ASSEMBLY	1.49 Kg
07	#A CYLINDER	101.5 Kg

SERVICE INSTRUCTIONS

SERVICE SEAL KIT 991/00147 PART

END CAP A/F 75 mm

PISTON HEAD A/F 75 mm

RAM SPECIFICATIONS - RDS @ ISSUE 6

MAXIMUM CHECK VALVE WORKING PRESSURE 310 BAR

PISTON ROD TENSILE RATINGS 570.4 kN

PISTON HEAD / ROD THREAD RATING 929.8 kN

CYLINDER / END CAP THREAD RATING 2092+2 kN

BUCKLING 1 EULER TO JCB STD00139 Δ 36.1 kN

BUCKLING : RANKING GORDON TO JCB STD00139 Δ 34.2 kN

FACTOR OF SAFETY ON ALL VALUES = 1.0

NOTE: PIPE COPS ARE TO BE FITTED ONTO ALL PIPE ENDS TO ENSURE THREAD AND CONTAMINATION PROTECTION DURING PAINTING & TRANSPORTATION.

COMPONENT CHARACTERISTICS - CRITICAL & SIGNIFICANT Δ Δ Δ

DESCRIPTION	Δ OR Δ INSTRUCTION / STANDARD
MAXIMUM PRESSURE	Δ REFER TO JCB STANDARD STD00139
BURST PRESSURE	Δ REFER TO JCB STANDARD STD00139
CLEANLINESS	Δ PARTS TO CONFORM TO JCB CLEANLINESS STANDARD 9999/0003
MAXIMUM FLUID VOLUME 22.56 LITRES	Δ PARTS TO CONFORM TO JCB CLEANLINESS STANDARD 9999/0003
HYDRAULIC PIPEWORK	Δ PIPES MUST NOT BE USED FOR LIFTING CYLINDERS OR SUBJECTED TO LIFTING FORCE OR COMPRESSION DURING HANDLING.
PAINT	Δ PAINT PERFORMANCE TO 4200/0000 CLASS B, COLOUR SPECIFICATION TO STD PART/001
INTERNAL LEAKAGE	Δ TO JCB STANDARD STD00139
DURABILITY/FATIGUE	Δ TO JCB STANDARD STD00139
END CAP LOCKING FLUID	Δ LOCKING FLUID APPLICATION TO JCB STD 9992/0002 TYP* APPLY TO LAST TWO THREADS OVER LENGTH 6mm
TECHNICAL DELIVERY, MANUFACTURE, ASSEMBLY & VERIFICATION REQUIREMENTS	Δ TO JCB STANDARD STD00166

GA RAM INNER EXTN 90 x 60

CLASSIFIED IN GA TYPE

REVISION NUMBER SHEET NUMBER

557/60066 1 OF 2

THIS DRAWING IS THE OFFICIAL PROPERTY OF

J.C.B. EMPOWERED EXCAVATORS LTD

DESIGNED BY DATE

WILLIAM OGDEN

LODGE

ISSUED BY DATE

MRS HODGSON

197

NOTES:

1. 20 50

2. 20 50

3. 20 50

4. 20 50

5. 20 50

6. 20 50

7. 20 50

8. 20 50

9. 20 50

10. 20 50

11. 20 50

12. 20 50

13. 20 50

14. 20 50

15. 20 50

16. 20 50

17. 20 50

18. 20 50

19. 20 50

20. 20 50

21. 20 50

22. 20 50

23. 20 50

24. 20 50

25. 20 50

26. 20 50

27. 20 50

28. 20 50

29. 20 50

30. 20 50

31. 20 50

32. 20 50

33. 20 50

34. 20 50

35. 20 50

36. 20 50

37. 20 50

38. 20 50

39. 20 50

40. 20 50

41. 20 50

42. 20 50

43. 20 50

44. 20 50

45. 20 50

46. 20 50

47. 20 50

48. 20 50

49. 20 50

50. 20 50

51. 20 50

52. 20 50

53. 20 50

54. 20 50

55. 20 50

56. 20 50

57. 20 50

58. 20 50

59. 20 50

60. 20 50

61. 20 50

62. 20 50

63. 20 50

64. 20 50

65. 20 50

66. 20 50

67. 20 50

68. 20 50

69. 20 50

70. 20 50

71. 20 50

72. 20 50

73. 20 50

74. 20 50

75. 20 50

76. 20 50

77. 20 50

78. 20 50

79. 20 50

80. 20 50

81. 20 50

82. 20 50

83. 20 50

84. 20 50

85. 20 50

86. 20 50

87. 20 50

88. 20 50

89. 20 50

90. 20 50

91. 20 50

92. 20 50

93. 20 50

94. 20 50

95. 20 50

96. 20 50

97. 20 50

98. 20 50

99. 20 50

100. 20 50

101. 20 50

102. 20 50

103. 20 50

104. 20 50

105. 20 50

106. 20 50

107. 20 50

108. 20 50

109. 20 50

110. 20 50

111. 20 50

112. 20 50

113. 20 50

114. 20 50

115. 20 50

116. 20 50

117. 20 50

118. 20 50

119. 20 50

120. 20 50

121. 20 50

122. 20 50

123. 20 50

124. 20 50

125. 20 50

126. 20 50

127. 20 50

128. 20 50

129. 20 50

130. 20 50

131. 20 50

132. 20 50

133. 20 50

134. 20 50

135. 20 50

136. 20 50

137. 20 50

138. 20 50

139. 20 50

140. 20 50

141. 20 50

142. 20 50

143. 20 50

144. 20 50

145. 20 50

146. 20 50

147. 20 50

148. 20 50

149. 20 50

150. 20 50

151. 20 50

152. 20 50

153. 20 50

154. 20 50

155. 20 50

156. 20 50

157. 20 50

158. 20 50

159. 20 50

160. 20 50

161. 20 50

162. 20 50

163. 20 50

164. 20 50

165. 20 50

166. 20 50

167. 20 50

168. 20 50

169. 20 50

170. 20 50

171. 20 50

172. 20 50

173. 20 50

174. 20 50

175. 20 50

176. 20 50

177. 20 50

178. 20 50

179. 20 50

180. 20 50

181. 20 50

182. 20 50

183. 20 50

184. 20 50

185. 20 50

186. 20 50

187. 20 50

188. 20 50

189. 20 50

190. 20 50

191. 20 50

192. 20 50

193. 20 50

194. 20 50

195. 20 50

196. 20 50

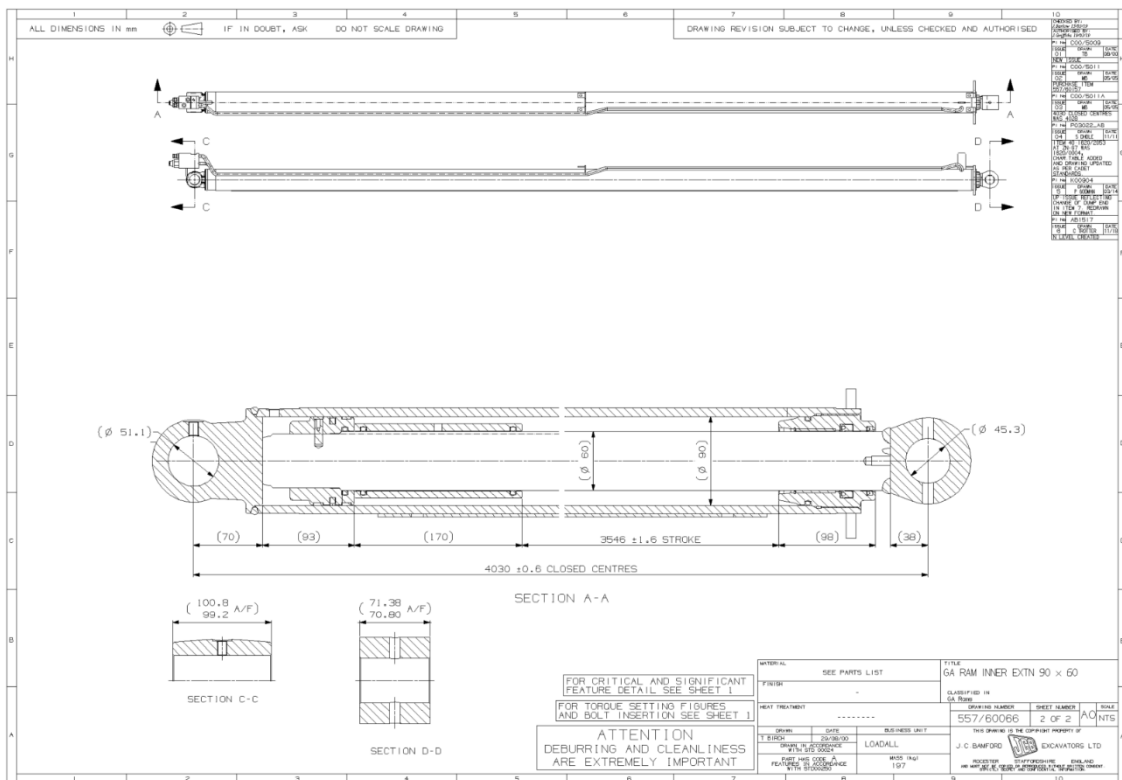
197. 20 50

198. 20 50

199. 20 50

200. 20 50

201. 20 50



### 3. Aplicação do item importado

Os Atuadores mecânicos de dupla ação são aplicados em manipulador telescópico



### 4. Função do item importado no produto fabricado pela empresa pleiteante do Ex-Tarifário

Os Atuadores mecânicos de dupla ação têm como função converter a energia hidráulica em força mecânica, realizando o movimento de componentes da máquina. Esse componente é essencial para executar funções como levantamento, inclinação, escavação, empurrar ou puxar cargas pesadas, ou ajustar a posição de partes da máquina.